

# RNA Sequencing of Early-Stage Gastric Adenocarcinoma Reveals Multiple Activated Pathways and Novel Long Non-Coding RNAs in Patient Tissue Samples

Sadegh Fattahi<sup>1,2,3</sup>, Novin Nikbakhsh<sup>4</sup>, Hassan Taheri<sup>5</sup>,  
Mohammad Ranaee<sup>6</sup>, Haleh Akhavan-Niaki<sup>\*2,7</sup>

## Abstract

**Background:** Gastric cancer is among the most common cancers worldwide that currently lacks effective diagnostic biomarkers and therapeutic targets. Next-generation RNA sequencing is a powerful tool that allows rapid and accurate transcriptome-wide profiling to detect differentially expressed transcripts involved in normal biological and pathological processes. Given the function of this technique, it has the potential to identify new molecular targets for the early diagnosis of disease, particularly in gastric adenocarcinoma.

**Methods:** In this study, whole-transcriptome analysis was performed with RNA sequencing on tumoral and non-tumoral tissue samples from patients with early-stage gastric cancer. Gene ontology and pathway enrichment analysis were used to determine the main function of the specific genes and pathways present in tissue samples.

**Results:** Analysis of the differentially expressed genes revealed 5 upregulated and 234 downregulated genes in gastric cancer tissues. Pathway enrichment analysis revealed significantly dysregulated signalling pathways, including those involved in gastric acid secretion, drug metabolism and transporters, molecular toxicology, O-linked glycosylation of mucins, immunotoxicity, metabolism of xenobiotics by cytochrome P450, and glycosylation. We also found novel downregulated non-coding RNAs present in gastric cancer tissues, including GATA6 antisense RNA 1, antisense to LYZ, antisense P4HB, overlapping ACER2, long intergenic non-protein coding RNA 2688 (LINC02688) and uncharacterized LOC25845 (PP7080).

**Conclusions:** The transcriptomic data found in this study illustrates the power of RNA-sequencing in discovering novel genes and tumorigenic pathways involved in human carcinogenesis. The anomalies present in these genes may serve as promising tools for the development of accurate diagnostic biomarkers for the detection of early-stage gastric cancer.

**Keywords:** Gastric Cancer, LncRNAs Signalling Pathway, RNA-sequencing.

## Introduction

Gastric cancer (GC) is the fifth most common type of cancer, accounting for about 5.7 % of all cases (1). Risk factors include genetic, epigenetic

and environmental factors such as diet and infections (2-4). Although significant progress has been made in recent years against gastric cancer,

1: Student Research Committee, Babol University of Medical Sciences, Babol, Iran.

2: Cellular and Molecular Biology Research Center, Health Research Institute, Babol University of Medical Sciences, Babol, Iran.

3: North Research Center of Pasteur Institute, Amol, Iran.

4: Department of Surgery, Rouhani hospital Babol University of Medical Sciences, Babol, Iran.

5: Department of Internal Medicine, Rouhani hospital Babol University of Medical Sciences, Babol, Iran.

6: Department of Pathology, Rouhani hospital, Babol University of Medical Sciences, Babol, Iran.

7: Department of Genetics, Faculty of Medicine, Babol University of Medical Sciences, Babol, Iran.

\*Corresponding author: Haleh Akhavan-Niaki; Tel: +98 911 125 5920; E-mail: halehakhavan@yahoo.com.

Received: 12 Sep, 2020; Accepted: 24 Sep, 2020

the treatment of advanced GC remains a major challenge due to late stage diagnosis and its poor prognosis (5-7). Whilst reliably detecting early-stage biomarkers in cancers is still a challenge, the next generation sequencing-based assays can help detect malignancies in their earliest stages. Genome-wide transcriptome analysis methods such as microarrays and RNA-sequencing (RNA-seq) have enriched our understanding of human cancer. The advances of transcriptome analysis have and continue to enhance our understanding of the biology of tumor cells, key molecular pathways, relevant biomarkers, and the mechanisms of cancer progression and tumor resistance (8-11). More importantly, RNA-seq provides new insights into the roles of the genes in signalling pathways that contribute to the development of cancer (12, 13). The use of the subsequent bioinformatic analysis tools, such as gene ontology (GO) and pathway enrichment analysis could reveal genes and pathways involved in human pathology (14, 15). Indeed, RNA-seq technology has been used to discover non-coding RNAs (ncRNAs), such as microRNAs, long non-coding RNAs (lncRNAs), antisense RNAs, and pseudogenes involved in the development and progression of a range of cancers, including gastric, colorectal, and cervical cancer (16-19). The advent of these new technologies marked the rise of precision medicine, a novel approach that develops strategies for treatment and prevention based on a person's own unique disease-driven molecular alterations (20, 21). Therefore, collecting genetic information from individuals can aid in our understanding of the causes and risk factors of diseases. In this study, we performed RNA-seq transcriptomic analysis to evaluate the pathways and novel transcripts involved in the progression of GC. Differentially expressed genes (DEGs) among matched cancerous and non-cancerous human gastric tissues were identified. To identify the common biological functions and signalling pathways of the enriched DEGs, we applied bioinformatic analysis, including GO and Kyoto Encyclopedia of Genes and Genomes (KEGG) pathway enrichment analysis.

## Materials and Methods

### *Patients*

Two male patients diagnosed with GC adenocarcinoma were enrolled in this study. Samples were individually snap-frozen in liquid nitrogen immediately after surgery, and thereafter stored at  $-80^{\circ}\text{C}$  without thawing for further analyses. Diagnosis of all cases was histologically confirmed by a pathologist using haematoxylin and eosin (H&E) staining. Both patients had no family history of cancer and no prior neoadjuvant chemotherapy. Histological analysis of their tumoral tissues confirmed stage Ia and grade II adenocarcinoma, with no detectable lymph node metastasis. For each patient, both tumoral and their adjacent non-tumoral tissues were subjected to next-generation RNA-sequencing. Molecular analysis confirmed the absence of Epstein-Barr virus (EBV) and *Helicobacter pylori* infection in both tumoral and non-tumoral tissues. The study was approved by the ethical committee of Babol University of Medical Sciences, and all participants gave their informed written consent.

### *RNA extraction*

Total RNA was isolated from each sample using RNX-plus reagent (Cinagen, Iran), according to the manufacturer's instructions. The purity and RNA integrity number (RIN) was assessed using a RNA Nano 6000 Assay kit with the Bioanalyzer 2100 system (Agilent Technologies, USA). RNA samples with a RIN greater than 7 were considered for cDNA library preparation and subsequent RNA-seq.

### *Library preparation and sequencing*

Sequencing libraries and RNA-seq experiments were carried out by BGI Company (Shenzhen, China). Briefly, before constructing the RNA-seq libraries, ribosomal RNA (rRNA) was removed from total RNA using the Ribo-Zero rRNA removal kit (Epicentre Biotechnologies, Madison, WI, USA). The RNA-seq libraries were constructed using a NEBNext® Ultra™ RNA Library Prep kit (New England Biolabs, UK) according to the manufacturer's protocol.

Following this, the RNA-seq library then underwent paired-end sequencing ( $2 \times 150$  bp) using the Illumina HiSeq™ 2500 platform. The quality of the raw reads was assessed using FastQC and MultiQC. Adapter sequences were trimmed and any low-quality reads or reads below a certain length from the raw FastQC reads were removed using Trimmomatic software. The clean reads were aligned to the hg19 assembly of the human reference genome using the Hisat2 alignment program.

### **Identification of differentially expressed genes (DEGs)**

Fragments Per Kilobase Million Mapped Reads (FPKM) was used to quantify transcript levels. Differential gene expression analysis was performed using the Bioconductor package DESeq2 (version 1.14.0). For this analysis, a Benjamini and Hochberg (BH) P-value adjustment was performed and a false discovery rate (FDR) of 0.05 was applied. Only genes that had a P-adjusted value of  $\leq 0.05$  and  $\log_2$  (fold change) greater than or equal to 1 were considered differentially expressed.

### **Gene ontology and pathway enrichment analysis**

The generic gene ontology term finder (<https://go.princeton.edu/>) and G: Profiler ([https://biit.cs.ut.ee/gprofiler\\_beta/gost](https://biit.cs.ut.ee/gprofiler_beta/gost)) online based tools were employed to identify the significantly enriched GO functions in the biological processes (BP), molecular function, and cellular component (CC) categories for DEGs. Kyoto Encyclopaedia of Genes and Genomes (KEGG) pathway enrichment analysis was also performed for the DEGs with KOBASS 3.0

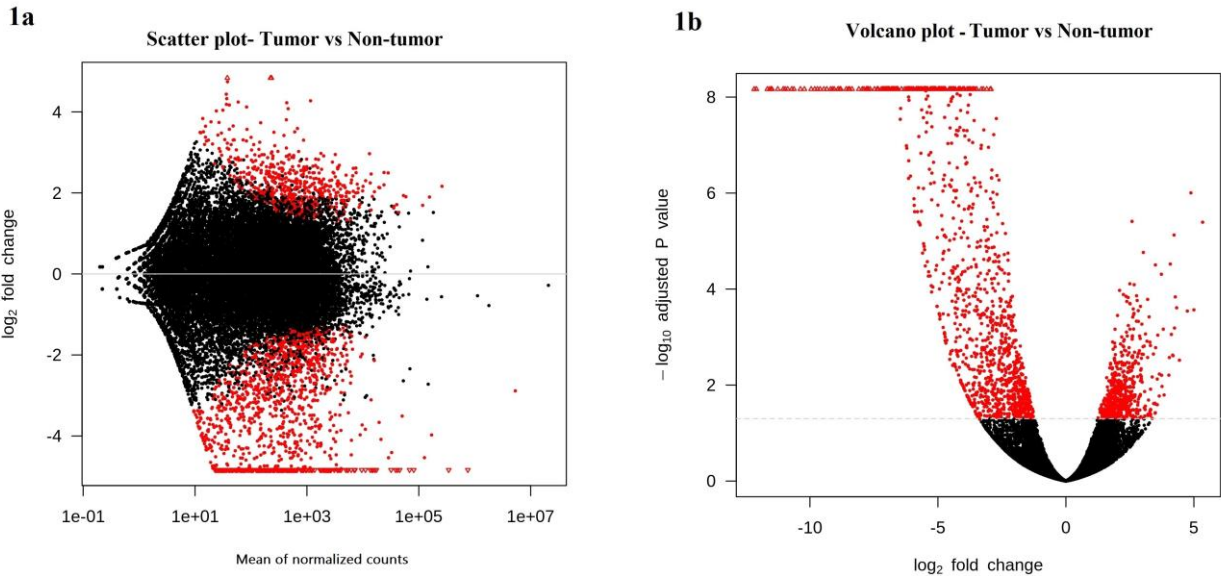
([http://kobas.cbi.pku.edu.cn/anno\\_iden.php](http://kobas.cbi.pku.edu.cn/anno_iden.php)). Furthermore, over 180 pathways or disease-focused genes from Qiagen were used for additional pathway enrichment. The pathway- or disease-focused genes were obtained from the Qiagen website (<https://www.qiagen.com/us/shop/pcr/primer-sets/rt2-profiler-pcr-arrays/?#orderinginformation>).

Each pathway was then mapped to all DEGs, and the significantly expressed genes were recognized for every pathway according to the following rules: (1) genes with adjusted p values  $< 0.0001$  and baseMean greater than 400; (2) pathways with at least 5 DEGs.

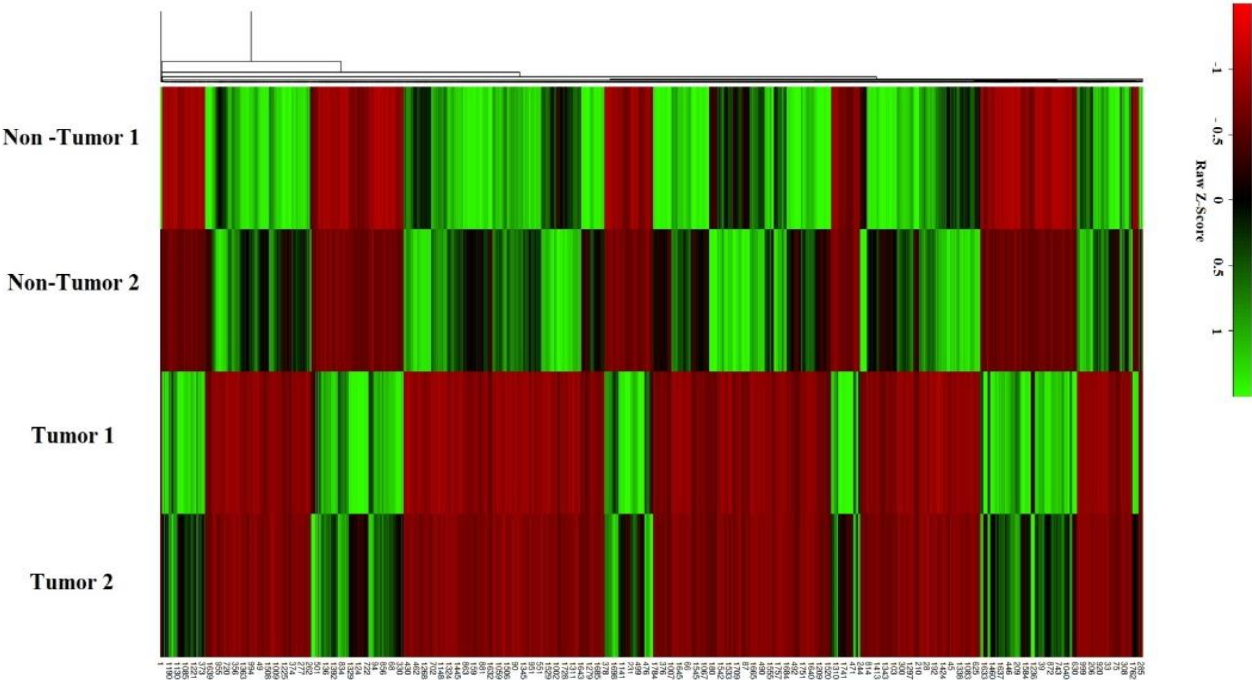
## **Results**

### **Differentially expressed genes (DEGs)**

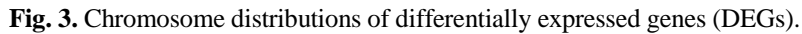
Transcriptome sequencing data revealed 1788 dysregulated RNAs corresponding to 578 genes that were significantly up-regulated and 1210 genes that were significantly down-regulated in tumoral tissues, compared to the adjacent non-tumoral tissues. Interestingly, 111 (6.2%) DEGs corresponded to novel transcripts and non-coding transcripts. To determine how the DEGs were different among the tumor and non-tumor tissues, scatter and volcano plots were obtained from pairwise comparisons between samples (Fig. 1a, 1b). The scatter plots compared the gene expression levels pairwise among the samples, while volcano plots were generated using  $\log_2$  fold-change against  $-\log_{10}$  (p-value) displaying the amount of DEGs. To identify unique gene expression signatures and genes with similar expression patterns across tumoral and non-tumoral tissue, hierarchical clustering based on the gene list was used (Fig. 2). As shown in Figure 2, DEGs were similar in both participants. Furthermore, we considered the physical localization of DEGs along each chromosome. As shown in Figure 3, 148 out of 240 (61.6%) DEGs were placed on the q-arm of the chromosomes. In addition, 12.5%, 11.3%, and 8.7% of DEGs were located on chromosomes 19, 1, and 11, respectively. Following this analysis, the genes with low expression were removed, and those with a P value less than 0.0001 were considered for further analysis. Cut-offs for low abundant mRNAs and non-coding transcripts were  $\text{baseMean} \leq 400$  and  $\leq 300$ , respectively. After excluding low abundant RNAs, a total of 240 RNAs, including 235 down-regulated (6 non-coding-RNAs) and 5 up-regulated RNAs remained.



**Fig. 1.** 1a) MA-plot and b) Volcano plot of DEGs for two RNA-seq samples. Each gene is represented with a dot. The red dots indicate genes for which the log<sub>2</sub> fold change was significantly higher than 1 or less than -1.



**Fig. 2.** Heatmap of hierarchical clustering indicates differentially expressed genes (column) between tumoral and non-tumoral tissues. Red colour indicates down-regulation and green indicates up-regulation.

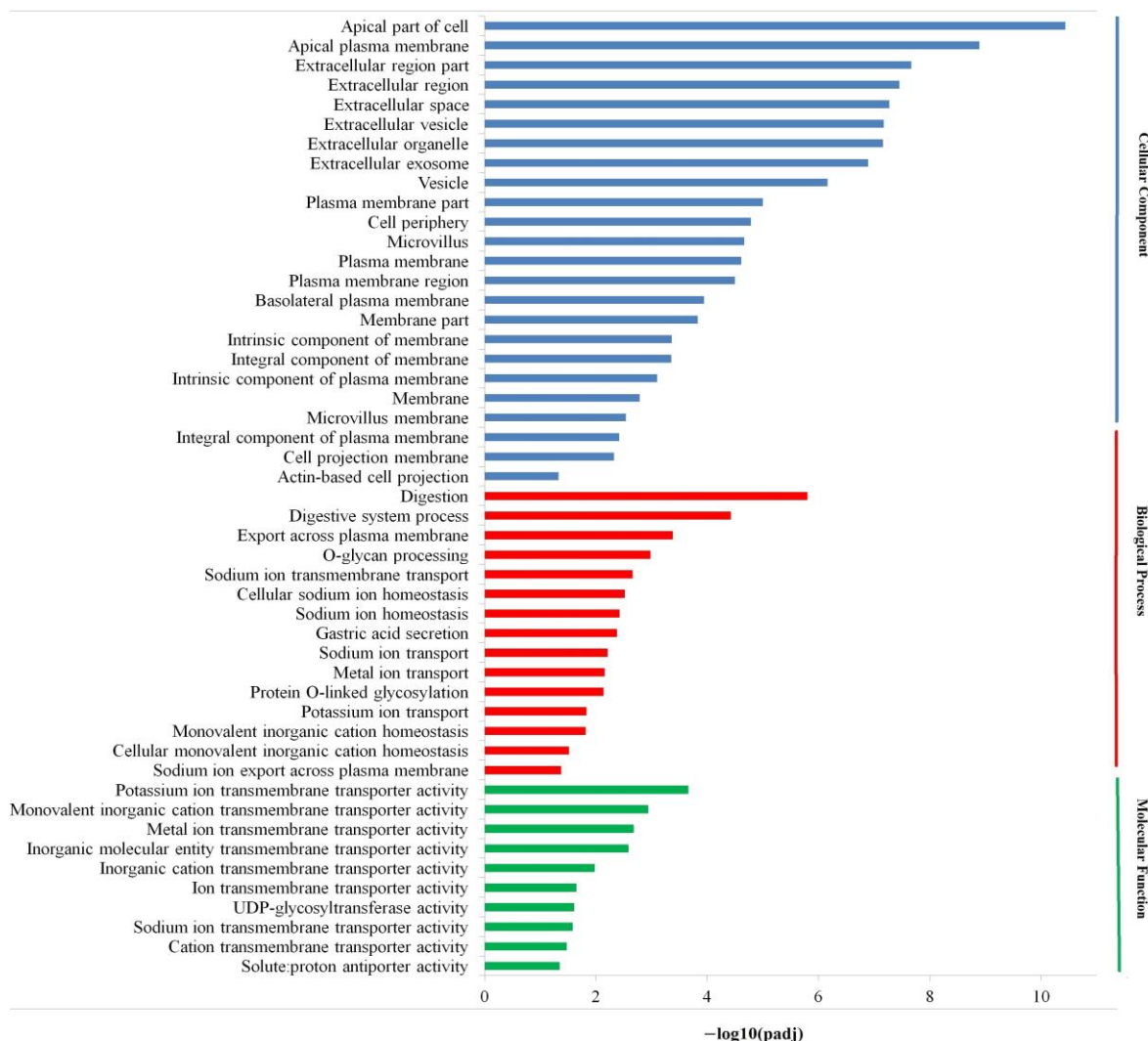




### Gene ontology and pathway enrichment analysis

DEGs were annotated according to different terms, and grouped into three broad categories: biological processes, cellular components, and molecular functions (Fig. 4). The terms most commonly associated with the functional categories of biological processes, cellular components, and molecular functions, included apical part of the cell, digestion, and potassium ion transmembrane transporter activity, respectively. Additionally, pathway enrichment analysis by KOBASS 3.0 showed that gastric acid secretion, O-linked glycosylation of mucins, and metabolism of xenobiotics by cytochrome P450 were the most significant DEGs among the enriched pathways in this study (Table 1).

Furthermore, pathways enriched by Qiagen panels for DEGs included drug metabolism, glycosylation, immunotoxicity, molecular toxicology, and tyrosine kinases pathways (Table 1). This difference observed between the two methods may be due to differences in the number of pathways they consider, pathway size, and the subcategories of pathways that they provide. These differences suggest that the combined use of multiple databases or integrative ones may uncover the complex combinations of dysregulated pathways present in GC. According to the national human genome research institute (NHGRI) GWAS catalogue, the DEGs identified in our study are highly correlated with GC (p value = 0.0093).



**Fig. 4.** Functional annotation of DEGs. The 239 significant DEGs were separated into 49 functional categories according to their relevant biological roles of cellular components, molecular functions, and biological processes.

**Table 1.** The top enriched KEGG, reactome and Qiagen pathway of DEGs.

Pathway	Database	Genes	P-value
Gastric acid secretion	KEGG	<i>CCKBR, SST, ATP4A, ATP4B, SLC9A4, CA2, KCNE2, KCNQ1, ATP1B1, SLC9A1, EZR</i>	7.138 e-08
Drug metabolism and transporters	Qiagen	<i>FBP1, ALDH3A1, CYP2S1, CYP3A5, ADH1C, TST, GCNT1, NQO1, ABCC3, SLC38A5</i>	3.654 e-07
Molecular toxicology	Qiagen	<i>CTSE, NR0B2, HPN, ABCC3, DUOX1, ADH1C, NQO1, DHCR24, LYZ</i>	6.209 e-05
O-linked glycosylation of mucins	Reactome	<i>MUC5AC, MUC6, GALNT6, MUC1, B3GNT7, B3GNT3, GCNT1, GALNT3</i>	2.547 e-05
Immunotoxicity	Qiagen	<i>CTSE, CYP3A5, KCNQ1, ID1, ADH1C, NQO1, LYZ, ISG20</i>	0.00064
Metabolism of xenobiotics by cytochrome P450	KEGG	<i>CYP2S1, ALDH3A1, AKR7A3, ADH1C, CYP3A5</i>	0.0157
Glycosylation	Qiagen	<i>GALNT6, ST6GALNAC1, B3GNT3, GCNT1, GALNT3</i>	0.0221

*CCKBR*: cholecystokinin B receptor, *SST*: somatostatin, *ATP4A*: ATPase H<sup>+</sup>/K<sup>+</sup> transporting subunit alpha, *ATP4B*: ATPase H<sup>+</sup>/K<sup>+</sup> transporting subunit beta, *SLC9A4*: solute carrier family 9 member A4, *CA2*: carbonic anhydrase 2, *KCNE2*: potassium voltage-gated channel subfamily E regulatory subunit 2, *KCNQ1*: potassium voltage-gated channel subfamily Q member 1, *ATP1B1*: ATPase Na<sup>+</sup>/K<sup>+</sup> transporting subunit beta 1, *SLC9A1*: solute carrier family 9 member A1, *EZR*: ezrin, *FBP1*: fructose-bisphosphatase 1, *ALDH3A1*: aldehyde dehydrogenase 3 family member A1, *CYP2S1*: cytochrome P450 family 2 subfamily S member 1, *CYP3A5*: cytochrome P450 family 3 subfamily A member 5, *ADH1C*: alcohol dehydrogenase 1C (class I), gamma polypeptide, *TST*: thiosulfate sulfurtransferase, *GSNT1*: glucosaminyl (N-acetyl) transferase 1, *NQO1*: NAD(P)H quinone dehydrogenase 1, *ABCC3*: ATP binding cassette subfamily C member 3, *SLC38A5*: solute carrier family 38 member 5, *CTSE*: cathepsin E, *NR0B2*: nuclear receptor subfamily 0 group B member 2, *HPN*: hepsin, *DUOX1*: dual oxidase 1, *DHCR24*: 24-dehydrocholesterol reductase, *LYZ*: lysozyme, *MUC5AC*: mucin 5AC, oligomeric mucus/gel-forming, *MUC6*: mucin 6, oligomeric mucus/gel-forming, *GALNT6*: polypeptide N-acetylgalactosaminyltransferase 6, *MUC1*: mucin 1, cell surface associated, *B3GNT7*: UDP-GlcNAc:betaGal beta-1,3-N-acetylglucosaminyltransferase 7, *B3GNT3*: UDP-GlcNAc:betaGal beta-1,3-N-acetylglucosaminyltransferase 3, *GCNT1*: glucosaminyl (N-acetyl) transferase 1, *GALNT3*: polypeptide N-acetylgalactosaminyltransferase 3, *ID1*: inhibitor of DNA binding 1, HLH protein, *AKR7A3*: aldo-keto reductase family 7 member A3, *ST6GALNAC1*: ST6 N-acetylgalactosaminide alpha-2,6-sialyltransferase 1.

### Comparison of TCGA data with in-house RNA sequencing data

To validate the set of DEGs found in the present study through our in-house RNA-seq analysis, gene expression data of 14 patients with stage 1a GC and 35 cancer-adjacent normal tissue samples were examined from The Cancer Genome Atlas (TCGA) through RNAnexus. Among the 239 DEGs that remained following the exclusion of genes with low levels of expression and p values below 0.0001, 22 showed the same regulatory pattern (up or down) in both publicly available TCGA data and the data obtained in the present study. These genes included, ATPase H<sup>+</sup>/K<sup>+</sup> transporting subunit alpha (*ATP4A*), ATPase H<sup>+</sup>/K<sup>+</sup> transporting subunit beta

(*ATP4B*), beta-1,3-glucuronyltransferase 1 (*B3GAT1*), butyrylcholinesterase (*BCHE*), complement C7 (*C7*), carbonic anhydrase 12 (*CA12*), cholecystokinin B receptor (*CCKBR*), erythrocyte membrane protein band 4.1 like 4B (*EPB41L4B*), ghrelin and obestatin prepropeptide (*GHRL*), gastric intrinsic factor (*GIF*), gastrokin 1 (*GKNI*), gastrokin 2 (*GKN2*), galectin 9C (*LGALS9C*), lipase F, gastric type (*LIPF*), NK6 homeobox 2 (*NKX6-2*), nuclear receptor subfamily 4 group A member 3 (*NR4A3*), prosaposin like 1 (*PSAPL1*), sodium channel epithelial 1 subunit beta (*SCNN1B*), solute carrier family 5 member 5 (*SLC5A5*), SRY-box transcription factor 21 (*SOX21*), somatostatin (*SST*) and tripartite motif containing 50 (*TRIM50*).

## Discussion

In the present study, we performed a transcriptome-wide analysis of the modifications present within the tumoral tissues of patients diagnosed with GC, compared to their adjacent non-tumoral tissue using both in-house RNA-seq data and the publicly available TCGA database. A total of 1677 DEGs and 111 differentially expressed novel transcripts and non-coding transcripts were found to be uniquely expressed in the GC tumoral tissues, compared to healthy non-tumoral tissue. These DEGs observed in the gastric tumor samples have been previously shown to be associated with the presence of GC. The RNA-seq data obtained in this study corroborated the findings of previous reports, emphasizing its function as a reliable method for identifying DEGs in GC. Consequently, following DEGs strengthening, out of 239 DEGs found by our in-house RNA-seq analysis, we were able to confirm the dysregulation of 22 genes by utilizing TCGA dataset in 14 GC cases with stage 1a GC. Among these genes, *ATP4A*, *ATP4B*, *GKN1*, *GKN2*, and gastric type *LIPF* were expressed only in stomach while ghrelin, *GHRL*, and *SLC5A5* are predominantly expressed in the stomach but also in many other tissues. Both *ATP4A* and *ATP4B* are subunits of the gastric proton pump, hydrogen potassium ( $H^+/K^+$ ) ATPase. This pump is found in parietal cells of the gastric oxyntic mucosa, involved in maintaining an acidic environment within the stomach through aiding in gastric acid secretion (22). The pathway enrichment analysis performed in this study revealed that gastric acid secretion was the most significantly enriched pathway found in the tumoral tissue samples. Recent evidence has unveiled a role for proton-pump inhibitors (PPIs) in the pathogenesis of GC due to their suppression of gastric acid secretion (23-25). A meta-analysis of observational studies on the effect of acid suppressive drugs on the development of GC found that H2 receptor blockers, H2 receptor antagonists (H2Ras), and PPIs significantly increased the risk for GC (26). A separate *in vivo* study exploring the relationship between GC and gastrin secretion found that 60% of gastrin-deficient mice developed gastric tumors in the antrum of the

stomach, related to the lack of acid secretion within the stomach (27). Both *GKN1* and *GKN2* have been identified as novel biomarkers for GC as have been found to be downregulated in GC patients. These genes are involved in the homeostatic regulation of the gastric mucosa (28-30). Several studies have shown a decrease in levels of *GKN1* and *GKN2* in gastric tumor tissues and GC cell lines. Yoon et al. found that exosomes carrying *GKN1* inhibited cell proliferation and induced apoptosis in the human GC-derived cell lines, AGS and MKN1 (31). The *in vivo* portion of this study indicated that tumor volume and weight were significantly reduced following treatment of nude mice with MKN1 xenograft tumors by exosomes carrying *GKN1* (31). Furthermore, Shi et al. found that restoration of *GKN2* in gastric cancer cells reduced cell viability and increased apoptosis through the activation of extrinsic apoptotic pathways (32).

Gastric lipase (*LIPF*) is a gastric tissue-restricted protein secreted by gastric chief cells in the fundic mucosa of the stomach. In the tissues of GC patients, *LIPF* has been observed to be downregulated (33, 34). Additionally, we found that trefoil factor 1 and trefoil factor 2, as well as mucin 5AC, mucin-like protein 3, mucin 1 and mucin 6 expressions were downregulated in GC tissues, compared to the surrounding healthy gastric tissue samples. Co-expression of trefoil peptides and mucins suggests a key role in mucosal protection by forming the mucosal barrier (35, 36). Additionally, our findings show DEGs enriched for pathways involved in drug metabolism and transporters, molecular toxicology, O-linked glycosylation of mucins, immunotoxicity, metabolism of xenobiotics by cytochrome P450, and glycosylation in the GC tissues. Genes associated with drug metabolism and drug transporters are involved in the regulation of the pharmacokinetics and pharmacodynamics of many agents such as toxic chemicals and hormones. The dysregulation of genes involved in drug metabolism have been shown to predispose individuals to developing certain cancers through enhancing metabolic activation and reducing detoxification



of environmental, dietary, and endogenous procarcinogens (37-39). Drug transporters and drug metabolizing enzymes also contribute to chemoresistance. Furthermore, metabolism of xenobiotics by cytochrome P450 plays an important role in the activation and/or deactivation of a wide range of xenobiotics, including anticancer drugs. Abnormalities in genes associated with xenobiotic metabolism by cytochrome P450 have been shown to have a critical function in the development and progression of many cancers, including mucinous epithelial ovarian cancer, clear cell renal cell carcinoma and GC (40-43).

Glycosylation is one of the most important posttranslational modifications of proteins required for the normal biological functioning of cells. This critical process influences cell signalling, immune recognition, and cell-cell interactions. Our TCGA data identified many changes in the expression of glycosylation genes that were associated with cancer. O-GalNAc glycans and N-glycans are two main classes of glycans found in membrane and extracellular glycoproteins. Mucins are a class of glycoproteins carrying many O-GalNAc glycans, and act as key molecules in the maintenance of gastrointestinal homeostasis. Aberrant glycosylation of mucins has been linked to the pathogenesis of many diseases, including GC (44-46). Immunotoxicity is defined as the detrimental effects on the functioning of the immune system that result from exposure to xenobiotics. Environmental and industrial chemicals have the potential to alter the immune system and lead to immunosuppression. The dysregulation of genes associated with immunosuppression may increase the incidence or severity of cancer by inhibiting the ability of the immune system to detect and kill cancer cells or cancer-causing

infections. We also identified novel transcripts and non-coding transcripts to be significantly downregulated in GC tissues. After low expression filtering of DEGs and the removal of reads with p values lower than 0.0001, we obtained 6 lncRNAs, including antisense to EXOC3 (PP7080, LOC25845), GATA6 antisense RNA 1, antisense to LYZ, antisense P4HB, overlapping ACER2, and long intergenic non-protein coding RNA 2688, all of which were downregulated in GC tissues in comparison with surrounding healthy tissue.

In the present study, we used RNA-sequencing to perform transcriptome-wide analysis of GC tissues to identify genes that were differentially expressed in GC in comparison to matched healthy gastric tissues. Our data provides a global view of the functions of the differentially expressed RNAs within GC tissue. Gastric acid secretion, drug metabolism and glycosylation were the main pathways dysregulated at the transcriptional level in GC. From our findings, the genes found to be upregulated in GC tissues, including *ATP4A*, *ATP4B*, *GKN1*, *GKN2*, *LIPF*, *ABC*, *SLC*, trefoil factor, and mucins may play important roles in the development of gastric adenocarcinoma. Further research is required to understand their roles and their use in the early diagnosis and treatment of GC. Thus, deeper analysis of these pathways could be reconsidered in future gene expression studies on GC cell lines and tissues.

## Acknowledgements

This study was supported by the Research Deputy of Babol University of Medical Sciences. Authors appreciate all people who contributed to this project through discussions or laboratory work.

Authors declare no conflict of interest.

## References

1. Bray F, Ferlay J, Soerjomataram I, Siegel RL, Torre LA, Jemal A. Global cancer statistics 2018: GLOBOCAN estimates of incidence and mortality worldwide for 36 cancers in 185 countries. *CA Cancer J Clin*. 2018;68(6):394-424.
2. Samadani A A, Nikbakhsh N, Taheri H, et al. CDX1/2 and KLF5 Expression and Epigenetic Modulation of Sonic Hedgehog Signaling in Gastric Adenocarcinoma. *Pathol Oncol Res*. 2019;25(3):1215-1222.

3. Fattahi S, Kosari-Monfared M, Ghadami E, Golpour M, Khodadadi P, Ghasemiyan M, et al. Infection-associated epigenetic alterations in gastric cancer: New insight in cancer therapy. *J Cell Physiol*. 2018;233(12):9261-9270.
4. Kahtan Al-Bayat M, Abdul-Rudha Abass S, Faraj Al-Marjani M. E-Cadherin Protein as a Potential Marker for Gastric Cancer and Its Association with *Helicobacter Pylori*- Induced Gastritis and Gastric Ulcer. *Rep Biochem Mol Biol*. 2019;8(3):269-277.
5. Dassen A E, Lemmens V E, Van De Poll-Franse L V, Creemers J, Brenninkmeijer S J, Lips D J, et al. Trends in incidence, treatment and survival of gastric adenocarcinoma between 1990 and 2007: a population-based study in the Netherlands. *Eur J Cancer*. 2010;46(6):1101-10.
6. Liu G, Xu M, Gao T, Xu L, Zeng P, Bo H, et al. Surgical Compliance and Outcomes in Gastric Cancer: a population-based cohort study. *J Cancer*. 2019;10(4):779-788.
7. Zhang J, Gan L, Wu Z, Yan S, Liu X, Guo W. The influence of marital status on the stage at diagnosis, treatment, and survival of adult patients with gastric cancer: a population-based study. *Oncotarget*. 2017;8(14):22385-22405.
8. Vishnubalaji R, Sasidharan Nair V, Ouararhni K, Elkord E, Alajez NM. Integrated Transcriptome and Pathway Analyses Revealed Multiple Activated Pathways in Breast Cancer. *Front Oncol*. 2019;9:910.
9. Sun H. Identification of key genes associated with gastric cancer based on DNA microarray data. *Oncol Lett*. 2016;11(1):525-530.
10. Valdes-Mora F, Handler K, Law A M K, Salomon R, Oakes S R, Ormandy CJ, et al. Single-Cell Transcriptomics in Cancer Immunobiology: The Future of Precision Oncology. *Front Immunol*. 2018;9:2582.
11. Deng Z, Wang H, Guo G, Li X, Cai Y, Tang Y, et al. Next-Generation Sequencing Analysis of mRNA Profile in Cisplatin-Resistant Gastric Cancer Cell Line SGC7901. *Med Sci Monit*. 2019;25:2386-2396.
12. Li D, Yang W, Arthur C, Liu J S, Cruz-Niera C, Qu Yan M. Systems biology analysis reveals new insights into invasive lung cancer. *BMC Syst Biol*. 2018;12(Suppl 7):117.
13. Elchuri S V, Rajasekaran S, Miles W O. RNA-Sequencing of Primary Retinoblastoma Tumors Provides New Insights and Challenges Into Tumor Development. *Front Genet*. 2018;9:170.
14. Yin H, Wang S, Zhang Y, Cai Y, Liu H. Analysis of Important Gene Ontology Terms and Biological Pathways Related to Pancreatic Cancer. *BioMed Research International*. 2016;2016:7861274.
15. Chen L, Zhang Y H, Lu G, Huang T, Cai Y-D. Analysis of cancer-related lncRNAs using gene ontology and KEGG pathways. *Artif Intell Med*. 2017;76:27-36.
16. Fattahi S, Kosari-Monfared M, Golpour M, Emami Z, Ghasemiyan M, Nouri M, et al. LncRNAs as potential diagnostic and prognostic biomarkers in gastric cancer: A novel approach to personalized medicine. *J Cell Physiol*. 2020;235(4):3189-3206.
17. Yamada A, Yu P, Lin W, Okugawa Y, Boland CR, Goel A. A RNA-Sequencing approach for the identification of novel long non-coding RNA biomarkers in colorectal cancer. *Sci Rep*. 2018;8(1):575.
18. Juan L, Tong H-L, Zhang P, Guo G, Wang Zi, Wen X, et al. Identification and characterization of novel serum microRNA candidates from deep sequencing in cervical cancer patients. *Sci Rep*. 2014;4:6277.
19. Zhang Y, Han T, Feng D, Li J, Wu M, Peng X, et al. Screening of non-invasive miRNA biomarker candidates for metastasis of gastric cancer by small RNA sequencing of plasma exosomes. *Carcinogenesis*. 2019;41(5):582-590.
20. Morash M, Mitchell H, Beltran H, Elemento O, Pathak J. The Role of Next-Generation Sequencing in Precision Medicine: A Review of Outcomes in Oncology. *J Pers Med*. 2018;8(3):30.
21. Suwinski P, Ong C, Ling M H T, Ming Poh Y, Khan A M, San Ong H. Advancing Personalized Medicine Through the Application of Whole Exome Sequencing and Big Data Analytics. *Front Genet*. 2019;10:49.
22. Yao X, Smolka A J. Gastric Parietal Cell Physiology and *Helicobacter pylori*-Induced Disease. *Gastroenterology*. 2019;156(8):2158-2173.

23. Coronel-Castillo C E, Contreras-Carmona J, Méndez-Sánchez N. The proton pump inhibitors use and gastric cancer development: is it a real association?. *AMJ*. 2018.
24. Cheung K S, Chan E W, Wong A Y S, Chen L, Wong I C K, Keung Leung W. Long-term proton pump inhibitors and risk of gastric cancer development after treatment for *Helicobacter pylori*: a population-based study. *Gut*. 2018;67(1):28-35.
25. Joo M K, Park J-J, Chun H J. Proton pump inhibitor: The dual role in gastric cancer. *World J Gastroenterol*. 2019;25(17):2058-2070.
26. Ahn J S, Eom C-S, Jeon C Y, Min Park S. Acid suppressive drugs and gastric cancer: a meta-analysis of observational studies. *World J Gastroenterol*. 2013;19(16):2560-8.
27. Zavros Y, Eaton K A, Kang W, Rathinavelu S, Katukuri V, Kao JY, et al. Chronic gastritis in the hypochlorhydric gastrin-deficient mouse progresses to adenocarcinoma. *Oncogene*. 2005;24(14):2354-66.
28. Dokhaee F, Mazhari S, Galehdari M, Bahadori Monfared A, Baghaei K. Evaluation of *GKN1* and *GKN2* gene expression as a biomarker of gastric cancer. *Gastroenterology and hepatology from bed to bench*. 2018;11(Suppl 1):S140-S145.
29. Koper-Lenkiewicz O M, Kaminska J, Gawronska B, Matowicka-Karna J. The role and diagnostic potential of gastrophilic 1 in gastric cancer. *Cancer Manag Res*. 2019;11:1921-1931.
30. Zhang Z, Xue H, Dong Y, Zhang J, Pan Y, Shi L, et al. *GKN2* promotes oxidative stress-induced gastric cancer cell apoptosis via the Hsc70 pathway. *J Exp Clin Cancer Res*. 2019;38(1):338.
31. Yoon J H, Ham I-H, Kim O, Ashktorab H, Smoot DT, Nam SW, et al. Gastrophilic 1 protein is a potential theragnostic target for gastric cancer. *Gastric Cancer*. 2018;21(6):956-967.
32. Shi L-S, Wang H, Wang F, FENG M, WANG M, GUAN W. Effects of gastrophilic-2 expression on gastric cancer cell apoptosis by activation of extrinsic apoptotic pathways. *Mol Med Rep*. 2014;10(6):2898-2904.
33. Kong Y, Zheng Y, Jia Y, Li P, Wang Y. Decreased *LIPF* expression is correlated with DGKA and predicts poor outcome of gastric cancer. *Oncol Rep*. 2016;36(4):1852-60.
34. Kim B, Bang S, Lee S, Kim S, Jung Y, Lee C, et al. Expression profiling and subtype-specific expression of stomach cancer. *Cancer Res*. 2003;63(23):8248-55.
35. Aihara E, Engevik K A, Montrose M H. Trefoil Factor Peptides and Gastrointestinal Function. *Annu Rev Physiol*. 2017;79:357-380.
36. Song J-Y, Kim B-W, Lee A-W, Lee K-Y, Chung I-S, Lee B-I, et al. Expression of MUC5AC and Trefoil Peptide 1 (TFF1) in the Subtypes of Intestinal Metaplasia. *Clin Endosc*. 2012;45(2):151-154.
37. Chen C-H. Genetic Variations and Polymorphisms of Metabolic Enzymes, in *Xenobiotic Metabolic Enzymes: Bioactivation and Antioxidant Defense*. 2020, Springer International Publishing. 155-68.
38. He X, Feng S. Role of Metabolic Enzymes P450 (CYP) on Activating Procarcinogen and their Polymorphisms on the Risk of Cancers. *Curr Drug Metab*. 2015;16(10):850-63.
39. Zanger U M, Schwab M. Cytochrome P450 enzymes in drug metabolism: Regulation of gene expression, enzyme activities, and impact of genetic variation. *Pharmacol Ther*. 2013;138(1):103-41.
40. Zhang G H, Chen M M, Kai J Y, Ma Q, Ling Zhong A, Hong Xie S, et al. Molecular profiling of mucinous epithelial ovarian cancer by weighted gene co-expression network analysis. *Gene*. 2019;709:56-64.
41. Mcfadyen M C, Melvin W T, Murray G I. Cytochrome P450 CYP1B1 activity in renal cell carcinoma. *Br J Cancer*. 2004;91(5):966-971.
42. Rodriguez-Antona C, Ingelman-Sundberg M. Cytochrome P450 pharmacogenetics and cancer. *Oncogene*. 2006;25(11):1679-91.
43. Murray G I, Taylor M C, Burke M D, Melvin WT. Enhanced expression of cytochrome P450 in stomach cancer. *Br J Cancer*. 1998;77(7):1040-1044.
44. Chugh S, Gnanapragassam V S, Jain M, Rachagani S, Ponnusamy MP, Batra SK. Pathobiological implications of mucin glycans in cancer: Sweet poison and novel targets. *Biochim Biophys Acta*. 2015;1856:211-25.

45. Tuccillo F M, De Laurentiis A, Palmieri C, Fiume G, Bonelli P, Borrelli A. Aberrant glycosylation as biomarker for cancer: focus on CD43. *Biomed Res Int*. 2014;2014:742831.

46. Duarte H O, Freitas D, Gomes C, Gomes J, Magalhães A, Reis CA. Mucin-Type O-Glycosylation in Gastric Carcinogenesis. *Biomolecules*. 2016;6(3):33.